



Probing Solutions.  
Made in Germany.

EN



# KSZ10C Series

Current Probe Calibrators


0.1 A to 10 A/20 A

Datasheet



## About the KSZ 10C Series

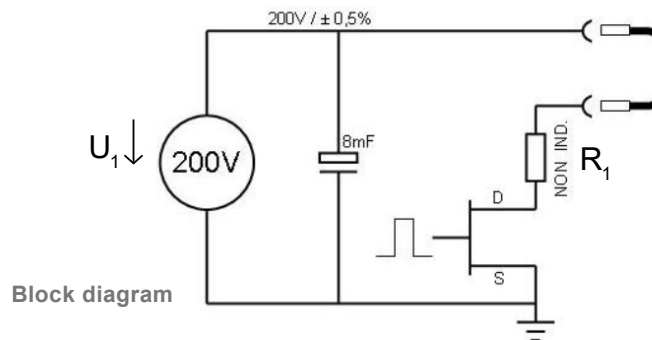
The KSZ10C and KSZ10C/20A calibration generators are used for RF and DC control of current clamps and current transformers up to 10A or 20A. Furthermore, it can be used for calibration due to the accuracy of its signals. The execution of both calibration processes is possible in one operation. A current clamp can be clamped to the current bracket. Current transformers can be contacted by a current line at the safety sockets. The KSZ10C or KSZ10C/20A calibration generators contain a capacitor bank of 8mF, which is charged to 200V. The capacitor voltage is applied between the red safety socket +200V and ground.

 When the device is switched on, 200V are permanently present at the output socket. The device is not potential-free!

Switch off the device via the mains switch before contacting / decontacting the current bar. Operate the device only with fully insulated cables. Make sure that the respective safety regulations are observed.

## Functional Description

The function of the device can be seen from the principle block diagram. A pulse current is generated from the capacitor bank via an accurate, low-inductance resistor through a fast switching transistor. The value of the pulse current results from the values  $U_1$  and the resistance coefficient  $R_1$ .  $U_1$  is stabilized.



## Specifications

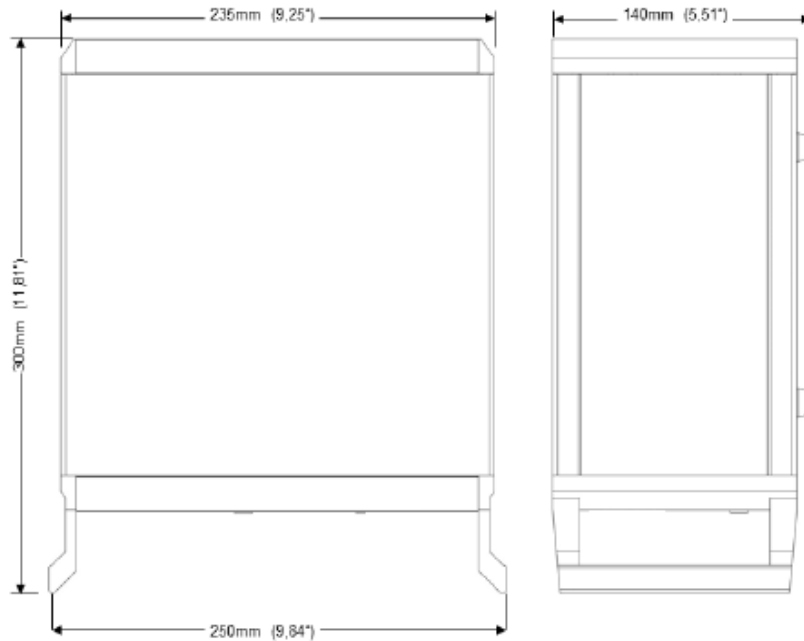
	KSZ10C	KSZ10C/20A
Bestellnummer (EU)	894-001-02A	894-001-C2A
<b>Electrical Specifications</b>		
Current pulse (square wave)	0.1A / 0.2A / 0.5A / 1A / 2A / 5A / 10A	0.1A / 0.2A / 0.5A / 1A / 2A / 5A / 10A / 20A
Accuracy	±2%	
Pulse width	1 ms	
Frequency	0.5 Hz	
Rise time	12 ns - 30 ns (current dependent)	12 ns - 48 ns (current dependent)
Overshoot	<2%	
Trigger output (low active)	15V <sub>peak</sub>	
Trigger pulse width	2 μs	
Mains voltage	90V - 250V AC, 50 Hz - 60 Hz	

<b>Mechanical Specifications</b>		
Weight	3700g	
Dimensions (W x H x D)	250 mm x 140 mm x 300 mm	

This product comes with 2 years warranty.  
Specifications that are not marked as guaranteed are typical.

Environmental Specifications		
Altitude	operating	up to 2000m
	non-operating	up to 15000m
Temperature Range	operating	0 °C to +50 °C
	non-operating	-40 °C to +71 °C
Maximum Relative Humidity	operating	80 % relative humidity for temperatures up to +31 °C, decreasing
	non-operating	95 % relative humidity for temperatures up to +40 °C

## Dimensions (H x W x D)




250 mm x 140 mm x 300 mm

## Scope of Delivery

The following items are included.

Item	Qty
Calibrator KSZ10C or KSZ10C/20A	1
Calibration certificate	1
Power cord	1
Instruction Manual	1

## Option for KSZ10C Series

Options	Order No.
Interlock	INTERL-KSZ
Control cable (2m) for connection to a closing contact (protective cover). Connection to the device via LEMO-Push-Pull connector on the back of the device.	

## **Manufacturer**

PMK Mess- und Kommunikationstechnik GmbH  
Koenigsteinerstrasse 98  
65812 Bad Soden am Taunus, Germany

Phone: +49 (0) 6196 5927 - 930  
Fax: +49 (0) 6196 5927 - 939

Internet: [www.pmk.de](http://www.pmk.de)  
E-Mail: [sales@pmk.de](mailto:sales@pmk.de)

**Copyright © 2021 PMK - All rights reserved.**

Information in this publication supersedes that in all previously published material.  
Specifications are subject to change without notice.